

Model PCP/ 내 부식용 테프론 다이어프램 압력센서

Teflon Coated Ceramic Diaphragm Type Corrosion Proof Pressure Transmitter

Description

PCP model is suitable for corrosion resistant environment since it uses Teflon(PTFE) coated ceramic pressure cell and Teflon Pressure Port and PE case. Output of 0~5V or 1~5V or 0~10V or 4~20mA(2Wire), it may be interfaced with various controllers.

Features

- ▶ Built-in amplifier circuit(VDC, mA)
- ▶ Measuring range 0~1MPa
- ▶ 0.5%FS accuracy
- ▶ Piezoresistive ceramic cell
- ▶ Media-wetted materials
 Pressure Port : PTFE or PP or PVC
 Pressure Cell : PTFE Coated Ceramic(Al_2O_3)
 O-Ring : VITON or Karlez or Perfluoro

Applications

- ▶ Semiconductor Manufacturing Equipment
- ▶ High-purity Fluids
- ▶ Chemical Process
- ▶ Physics and Chemistry Equipment
- ▶ Waste Disposing Equipment



Specifications

Range

0 ~ 100kPa ... 1MPa (Gauge)

Performance

Accuracy	±0.5%FS(RSS)
Thermal Effect on Zero	±0.06%FS/°C
Thermal Effect on Span	±0.06%FS/°C
Compensated Temperature Range	-10 ~ 70°C
Operating Temperature Range	-20 ~ 80°C

Electrical

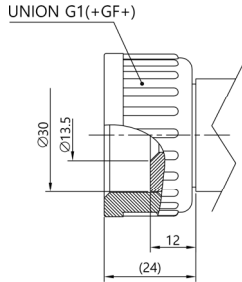
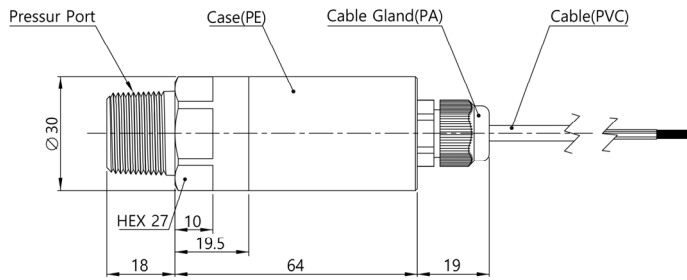
Excitation	11 ~ 28VDC
Output	0~5VDC, 1~5VDC, 0~10VDC, 4~20mA(2Wire)
Electrical Connection	Cable, DIN Connector

Physical

Proof Pressure	150%FS Max.
Burst Pressure	200%FS Min.
Pressure port	R(PT) 1/4", 3/8", 1/2", UNION(G1")
Media-Wetted Materials	Pressure Port : PTFE or PP or PVC / O-Ring : VITON or Karlez or Perfluoro

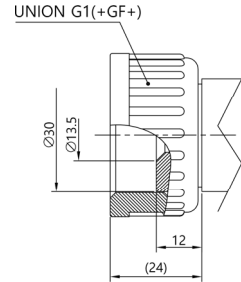
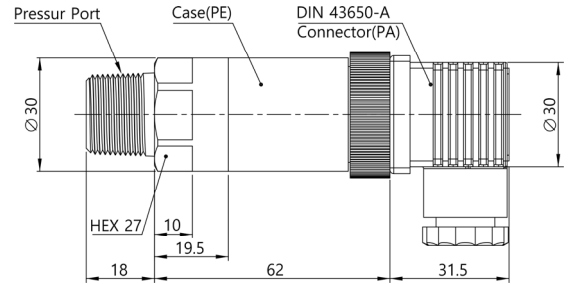
Dimension

▶ Cable Type



Color	Connections	
	V output	mA Output
Red	Input ⊕	Input ⊕
White	Common ⊖	Output ⊕
Green	Output ⊕	x
Shield	Earth	Earth

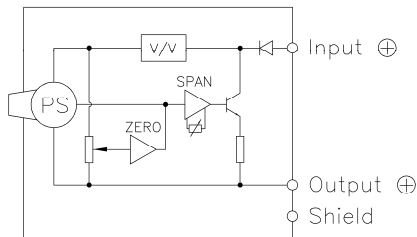
▶ DIN Connector Type



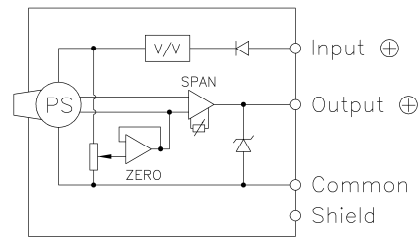
Pin No.	Connections	
	V output	mA Output
1	Input ⊕	Input ⊕
2	Common ⊖	Output ⊕
3	Output ⊕	x
⊕	Earth	Earth

Internal Circuit Diagram

▶ mA Output Type



▶ VDC Output Type



Ordering Information

PCP E 0100 R E I G - 000 - AA

Model Name

Output

C : 0~5V H : 4~20mA
E : 1~5V J : 0~10V

Pressure Range

XXXX : Pressure

Pressure Unit

R : kPa M : MPa
B : bar K : kgf/cm²
P : psi H : mmHg
C : cmH₂O

Pressure port

C : R(PT)1/4" P : UNION(G1)
A : R(PT)3/8" V : Port Option
E : R(PT)1/2"

Media-Wetted Materials

Pressure Port

A : PTFE
B : PVC
C : PP

O-Ring

A : VITON
B : Karlez
C : Perfluoro

Port Option

Type of Pressure Measurement

G : Gauge

Connecting Methods

C : Cable
I : DIN 43650-A connector