

# Explosion-Protected Differential Pressure Switch

Model No. **KCD-31 Series**

**DAEJIN**



**KCD-31**

[Explosion-protected of protection] Ex d IIC T4

## Summary

This gauge has the same structure as KCD-21 Series. It is a contact switch for differential pressure which can measure simple differential pressure and can be used as measuring sealed tank level, flux or for the prevention of blockage of filter.

### Safety Management

- Do not give impact during the transportation, installation and usage.
- Be sure to install pressure gauge to be horizontal and vertical.
- Do not use it over the capacity of the switch.

### Purpose of Use

- Indicating, warning, controlling of tank level in explosion district.
- Indicating, warning, controlling of fluid which was applied by differential pressure of orifice line in explosion district.
- Indicating, warning and controlling differential pressure of both end sides' filter in explosion district.

### Production Specification

- ▶ Accuracy
  - Grade :  $\pm 1.5\%$  of Full Scale
  - Repeatability :  $\pm 1.0\%$  of Adj Range
  - Dead Band :  $\pm 4.0\%$
- ▶ Scale Range
  - 0 ~ 50 kPa, 0 ~ 1 MPa
  - (※ 1 MPa = 10.19716 kgf/cm<sup>2</sup>)
- ▶ Working Pressure
  - Static pressure : 75% of Full Scale
  - Fluctuating pressure : 60% of Full Scale
- ▶ Working Temperature
  - Ambient : - 20 ~ 65°C
  - Fluid : - 20 ~ 80°C
- ▶ Explosion-Protected of Protection
  - Ex d IIC T4

### Product Specification

<p>+ Case</p> <ul style="list-style-type: none"> <li>· Aluminum(Hammer tone coating)</li> </ul>	<p>+ Contact rating</p> <ul style="list-style-type: none"> <li>· AC 125V, 250V 15A</li> <li>· DC 30V 2A / 125V 0.4A / 250V 0.2A</li> </ul>	<p>+ Bellows(Element)</p> <ul style="list-style-type: none"> <li>· STS 316</li> </ul>
<p>+ Cover</p> <ul style="list-style-type: none"> <li>· Aluminum(Hammer tone coating)</li> </ul>	<p>+ Pointer</p> <ul style="list-style-type: none"> <li>· Aluminum</li> <li>· Pointer black coating</li> </ul>	<p>+ Movement</p> <ul style="list-style-type: none"> <li>· STS 304</li> </ul>
<p>+ Connection</p> <ul style="list-style-type: none"> <li>· STS 316</li> <li>· PF, PT, NPT ↔ 1/2</li> </ul>	<p>+ Dial</p> <ul style="list-style-type: none"> <li>· Aluminum</li> <li>· White coating</li> <li>· Black gradation and characters</li> </ul>	<p>+ Contact Form</p> <ul style="list-style-type: none"> <li>· Micro Contact Type</li> <li>· SPDT * 1, SPDT * 2</li> <li>(High, Low, High &amp; High High &amp; Low, Low &amp; Low)</li> </ul>
<p>+ Window</p> <ul style="list-style-type: none"> <li>· Tempered safety glass,</li> </ul>	<p>+ Base Press</p> <ul style="list-style-type: none"> <li>· 5MPa</li> </ul>	<p>+ Option</p> <ul style="list-style-type: none"> <li>· Diaphragm Seal</li> <li>· Accessories</li> </ul>

Pressure Gauge

Differential Pressure Gauge & Switch

Accessories of Pressure Gauge

Thermometer & Thermometer Switch

Thermocouple & RTD

Thermowell

Transmitter

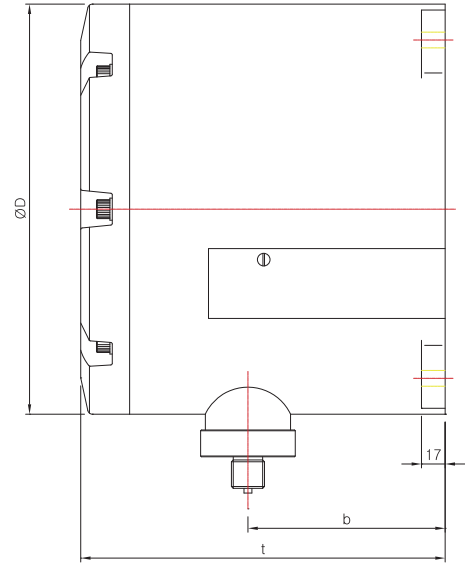
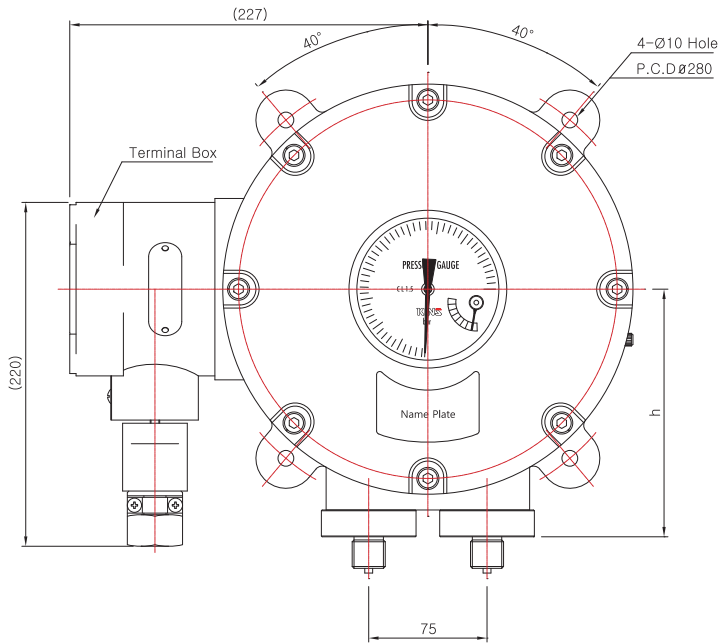
Indicator etc.

Technical data

# Explosion-Protected Differential Pressure Switch

## Model No. KCD-31 Series

### Model No. | KCD-31

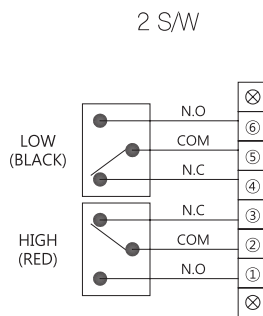
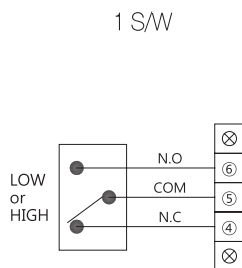


#### Dimensions (mm)

Model No.	Conn'n (d)	ØD	b	t	h
KCD-31	NPT & PT, PF 1/2	260	125	(230)	(156)

\*( )The measurement in the blanket is approximate.

#### Connection diagram



Pressure Gauge

Differential Pressure Gauge & Switch

Accessories of Pressure Gauge

Thermometer & Thermometer Switch

Thermocouple & R.T.D

Thermowell

Transmitter

Indicator etc.

Technical data