

# Euro gauge

## Industrial service pressure gauge

### Model : P253 series

Spec. sheet no. PD02-08

#### Service intended

P253



가

#### Nominal diameter

63, 100 and 160 mm

#### Accuracy

P2532 (63 mm) :  $\pm 1.6\%$  of full scale

P2534 (100 mm) and P2536 (160 mm) :  $\pm 1.0\%$  of full scale

#### Scale range (MPa, kPa, bar)

63 mm : -0.1 ~ 0 to 0 ~ 35 MPa

100 and 160 mm : -0.1 ~ 0 to 0 ~ 100 MPa

#### Working pressure

Steady : 75% of full scale (63 and 80 mm)

100% of full scale (100 and 160 mm)

Over range protection : 130% of full scale

#### Working temperature

Ambient : -20 ~ 60°C

Fluid : Max. 60°C

#### Degree of protection

EN60529/IEC529/IP65

#### Temperature effect

Accuracy at temperature above and below the reference temperature (20°C) will be effected by approximately

$\pm 0.4\%$  per 10°C of full scale



### Standard features

#### Pressure connection

Brass

#### Element

Brass

Model : P2534 (100 mm) and P2536 (160 mm)

<10 MPa : C type bourdon tube

$\geq 10$  MPa : Helical type bourdon tube with 316SS

Model : P2532 (63 mm)

<6 MPa : C type bourdon tube

$\geq 6$  MPa : Helical type bourdon tube

#### Blowout protection

Back, Rubber disc for 100 and 160 mm

Top, Rubber disc for 63 mm

#### Case

Stainless steel (304SS)

#### Cover

Stainless steel (304SS)

Bayonet type

#### Window

Laminated safety glass

#### Movement

63 mm : Brass

100 and 160 mm : Stainless steel

#### Dial

White aluminium with black graduations

#### Pointer

Black painted aluminium alloy

#### Process connection

63 mm :  $\frac{1}{4}$ " PT, NPT and PF

100 and 160 mm :  $\frac{1}{4}$ ",  $\frac{3}{8}$ ",  $\frac{1}{2}$ " PT, NPT and PF

#### Optional

Zero adjustable pointer

(Only available with diameter 100 and 160 mm)

DAEJIN

198 17 131 ( 가 C )

TEL : 02 - 2631 - 7290

FAX : 02 - 2675 - 0605

<http://www.gauge.co.kr>

e-mail : [dajinbs@hanmail.net](mailto:dajinbs@hanmail.net)

**1. Base model**

**P253** Industrial service pressure gauge

**2. Nominal diameter (mm)**

2 63  
4 100  
6 160

**3. Type of mounting**

**A** Bottom connection, direct  
**B** Bottom connection, surface, case mounting plate  
**F** Center back connection, direct, only available with diameter 63 mm  
**G** Lower back connection, direct, only available with diameter 100 mm  
**H** Center back connection, flush, case center mounting plate, only available with diameter 63 mm  
**I** Center back connection, flush, case center mounting plate with bracket, only available with diameter 63 mm  
**J** Center back connection, flush, cover mounting plate, only available with diameter 63 mm  
**L** Lower back connection, flush, case center mounting plate, only available with diameter 100 mm  
**M** Lower back connection, flush, case center mounting bracket, only available with diameter 100 mm  
**N** Lower back connection, flush, cover mounting plate, only available with diameter 100 mm  
**V** Center back connection, flush, cover mounting bracket, only available with diameter 63 mm  
**W** Lower back connection, flush, cover mounting bracket, only available with diameter 100 mm

**4. Accuracy**

3 ±1.0% of full scale, not available with diameter 63 mm  
4 ±1.6% of full scale, only available with diameter 63 mm

**5. Process connection**

**C** ¼"  
**D** ⅜", Not available with diameter 63 mm  
**E** ½", Not available with diameter 63 mm

**6. Connection type**

**B** PF  
**C** PT  
**D** NPT  
**F** BSPT  
**G** BSP (G)  
**Z** Other

**7. Unit**

**X** Refer to pressure unit and range table

**8. Range**

**XXX** Refer to pressure unit and range table

**9. Dial color**

1 2 colors  
5 3 colors

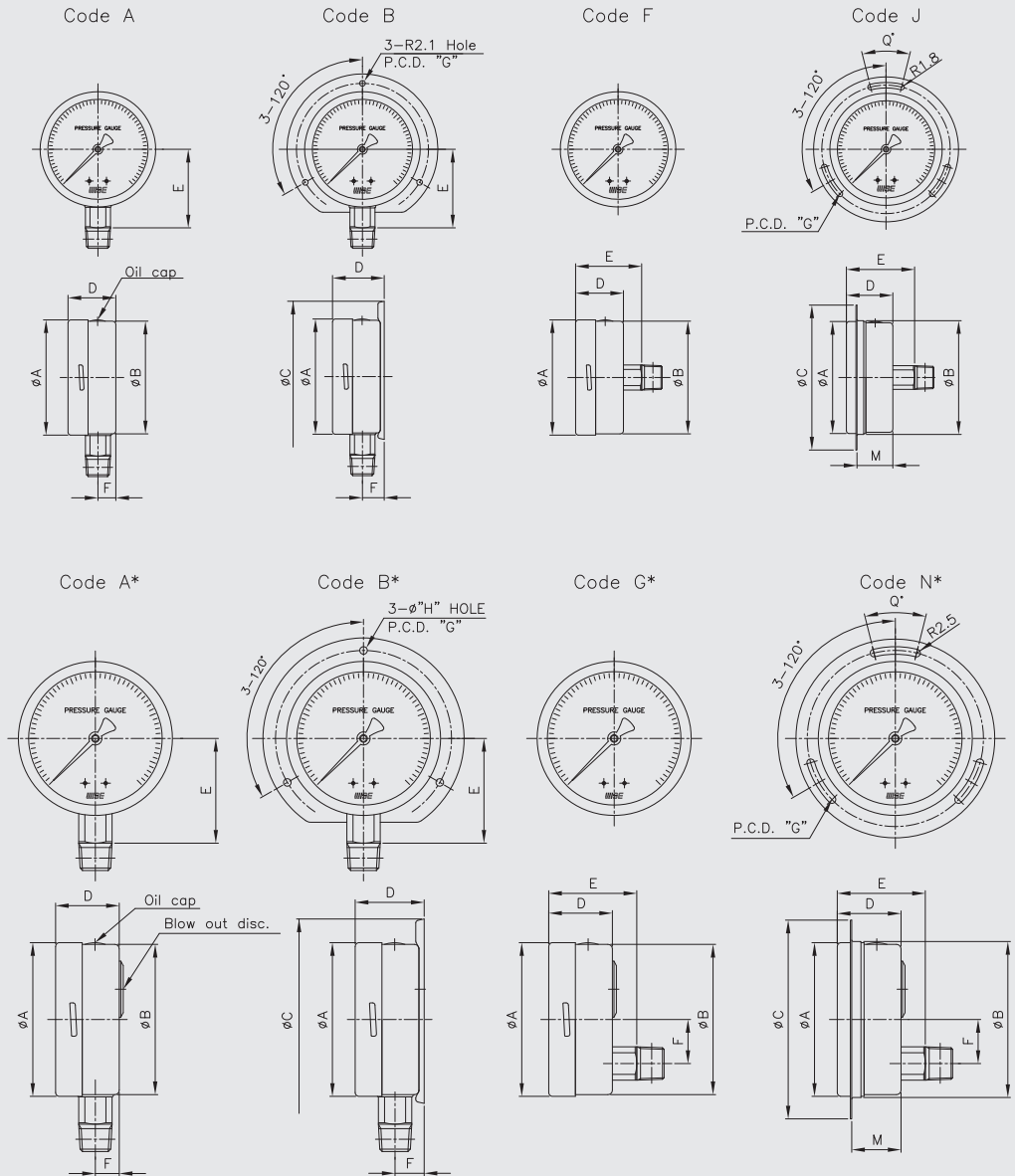
**10. Option**

0 None  
1 Accessories

1	2	3	4	5	6	7	8	9	10
P253	4	A	3	E	D	H	XXX	1	0

Sample  
ordering code

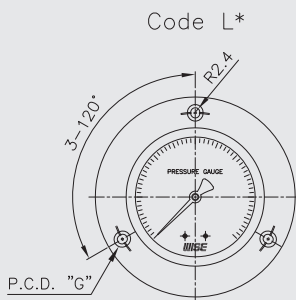
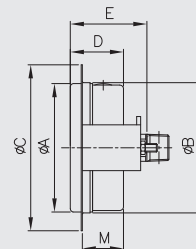
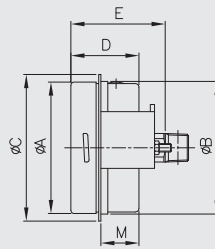
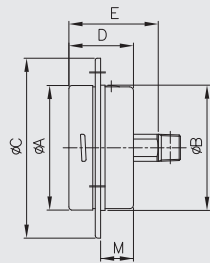
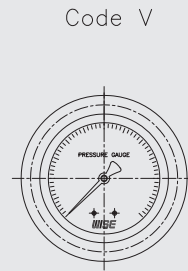
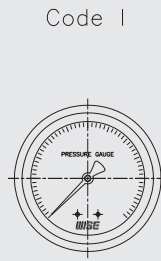
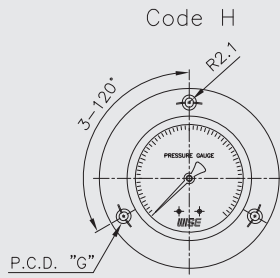
## P253 : Type of mounting (1/2)



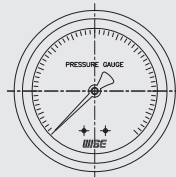
Dimensions (mm)

Dial size	Available code	A	B	C	D±2	E±2	F±1	M	G	H	Q
63	A	64	62		34	41.7	11				
	B	64		85	37	41.7	15		74~75		
	F	64	62		34	45					
	J	64	66	86	34	45		28	75		15
100	A*	101.3	99		50	65	16				
	B*	101.3		133	54.4	65	19.4		115~116	R2.5	
	G*	101.3	99		50	65	29				
	N*	101.3	103.1	130.5	50	65	29	45	116		28
160	A*	160.6	159		52.5	94	15.8				
	B*	160.6		196	56	94	19.3		178	5.8	

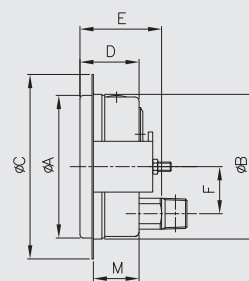
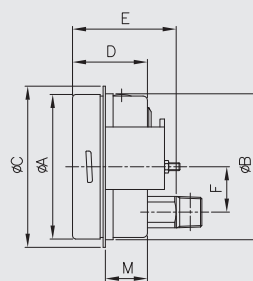
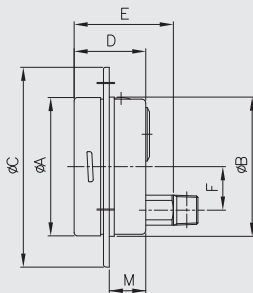
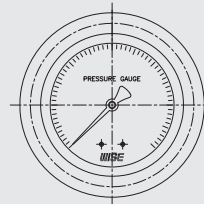
## P253 : Type of mounting (2/2)



Code M\*



Code W\*



Dimensions (mm)

Dial size	Available code	A	B	C	D $\pm 2$	E $\pm 2$	F $\pm 1$	M	G
63	H	64	64.5	92	34	45			77~78
	I	64	63.7	71	34	45		18.5	
	V	64	66	86	34	45		28	
100	L*	101.3	100.4	132	50	65	29	27.7	115~116
	M*	101.3	101	107.5	50	65	29	29.5	
	W*	101.3	103.1	130.5	50	65	29	45	

## Pressure unit and range table

Range and code	Unit and code			Nominal diameter		
	H : bar	I : MPa	J : kPa	63 mm	100 mm	160 mm
026	-1 ~ 0	-0.1 ~ 0	-100 ~ 0	O	O	O
041	0 ~ 1	0 ~ 0.1	0 ~ 100	O	O	O
133	0 ~ 1.6	0 ~ 0.16	0 ~ 160	X	O	O
042	0 ~ 2	0 ~ 0.2	0 ~ 200	O	O	O
134	0 ~ 2.5	0 ~ 0.25	0 ~ 250	X	O	O
043	0 ~ 3	0 ~ 0.3	0 ~ 300	O	O	O
044	0 ~ 4	0 ~ 0.4	0 ~ 400	O	O	O
045	0 ~ 6	0 ~ 0.6	0 ~ 600	O	O	O
047	0 ~ 10	0 ~ 1	0 ~ 1,000	O	O	O
050	0 ~ 15	0 ~ 1.5	X	O	O	O
143	0 ~ 16	0 ~ 1.6	X	O	O	O
051	0 ~ 20	0 ~ 2	X	O	O	O
052	0 ~ 25	0 ~ 2.5	X	O	O	O
054	0 ~ 35	0 ~ 3.5	X	O	O	O
151	0 ~ 40	0 ~ 4	X	O	O	O
055	0 ~ 50	0 ~ 5	X	O	O	O
056	0 ~ 60	0 ~ 6	X	O	O	O
057	0 ~ 70	0 ~ 7	X	O	O	O
058	0 ~ 100	0 ~ 10	X	O	O	O
059	0 ~ 150	0 ~ 15	X	O	O	O
060	0 ~ 160	0 ~ 16	X	O	O	O
062	0 ~ 250	0 ~ 25	X	O	O	O
064	0 ~ 350	0 ~ 35	X	O	O	O
065	0 ~ 400	0 ~ 40	X	X	O	O
066	0 ~ 500	0 ~ 50	X	X	O	O
067	0 ~ 600	0 ~ 60	X	X	O	O
068	0 ~ 700	0 ~ 70	X	X	O	O
070	0 ~ 1,000	0 ~ 100	X	O	O	O
027	-1 ~ 1	-0.1 ~ 0.1	-100 ~ 100	O	O	O
007	-1 ~ 1.5	-0.1 ~ 0.15	-100 ~ 150	X	O	O
028	-1 ~ 2	-0.1 ~ 0.2	-100 ~ 200	O	O	O
029	-1 ~ 3	-0.1 ~ 0.3	-100 ~ 300	O	O	O
030	-1 ~ 4	-0.1 ~ 0.4	-100 ~ 400	O	O	O
010	-1 ~ 5	-0.1 ~ 0.5	-100 ~ 500	O	O	O
031	-1 ~ 6	-0.1 ~ 0.6	-100 ~ 600	O	O	O
014	-1 ~ 9	-0.1 ~ 0.9	-100 ~ 900	O	O	O
032	-1 ~ 10	-0.1 ~ 1	-100 ~ 1,000	O	O	O
033	-1 ~ 15	-0.1 ~ 1.5	-100 ~ 1.5MPa	O	O	O
034	-1 ~ 20	-0.1 ~ 2	-100 ~ 2MPa	O	O	O
017	-1 ~ 24	-0.1 ~ 2.4	-100 ~ 2.4MPa	O	O	O
035	-1 ~ 25	-0.1 ~ 2.5	-100 ~ 2.5MPa	O	O	O

O : Available X : Not available